



PASSING THROUGH THE PORT OF CALAIS FOR UNACCOMPANIED TRAILERS

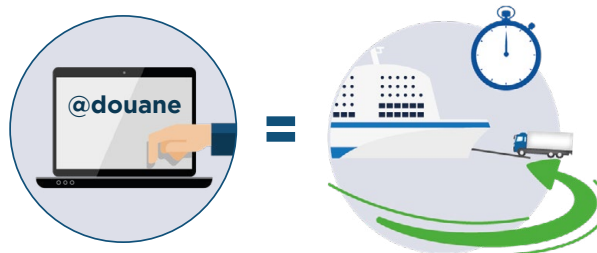
The UK's exit from the European Union will require new customs formalities and declarations. As the UK becomes a third country, the port of Calais will become a customs border representing the first point of entry and last point of exit for goods between the European Union and British Isles.



PREREQUISITES

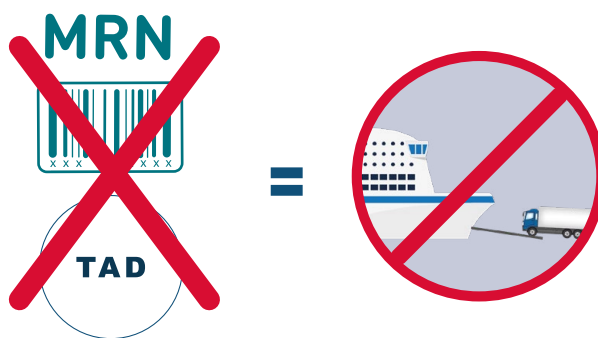
Customs formalities must be completed before the trailer arrives at the port of Calais (or Dover) for IMPORT and EXPORT for the French and British authorities.

FOR THE MOST PART, THESE FORMALITIES WILL HAVE BEEN CARRIED OUT BY THE SHIPPER OR THEIR CUSTOMS REPRESENTATIVE (RDE).



MAKE SURE THE CUSTOMS FORMALITIES RELATING TO THE GOODS BEING TRANSPORTED HAVE BEEN COMPLETED BEFORE SENDING THE TRAILER TO THE PORT.

THE MRN BAR CODE OR LOGISTICS ENVELOPE OR TAD MUST BE PROVIDED DURING BOOKING before the trailer arrives at the port of Calais (and the port of Dover)



THE TRAILER CANNOT BE LOADED IN THE ABSENCE OF CUSTOMS FORMALITIES CARRIED OUT BEFOREHAND.



Caution: it's your responsibility to stay informed of developments with UK customs decisions.





CALAIS
export EU

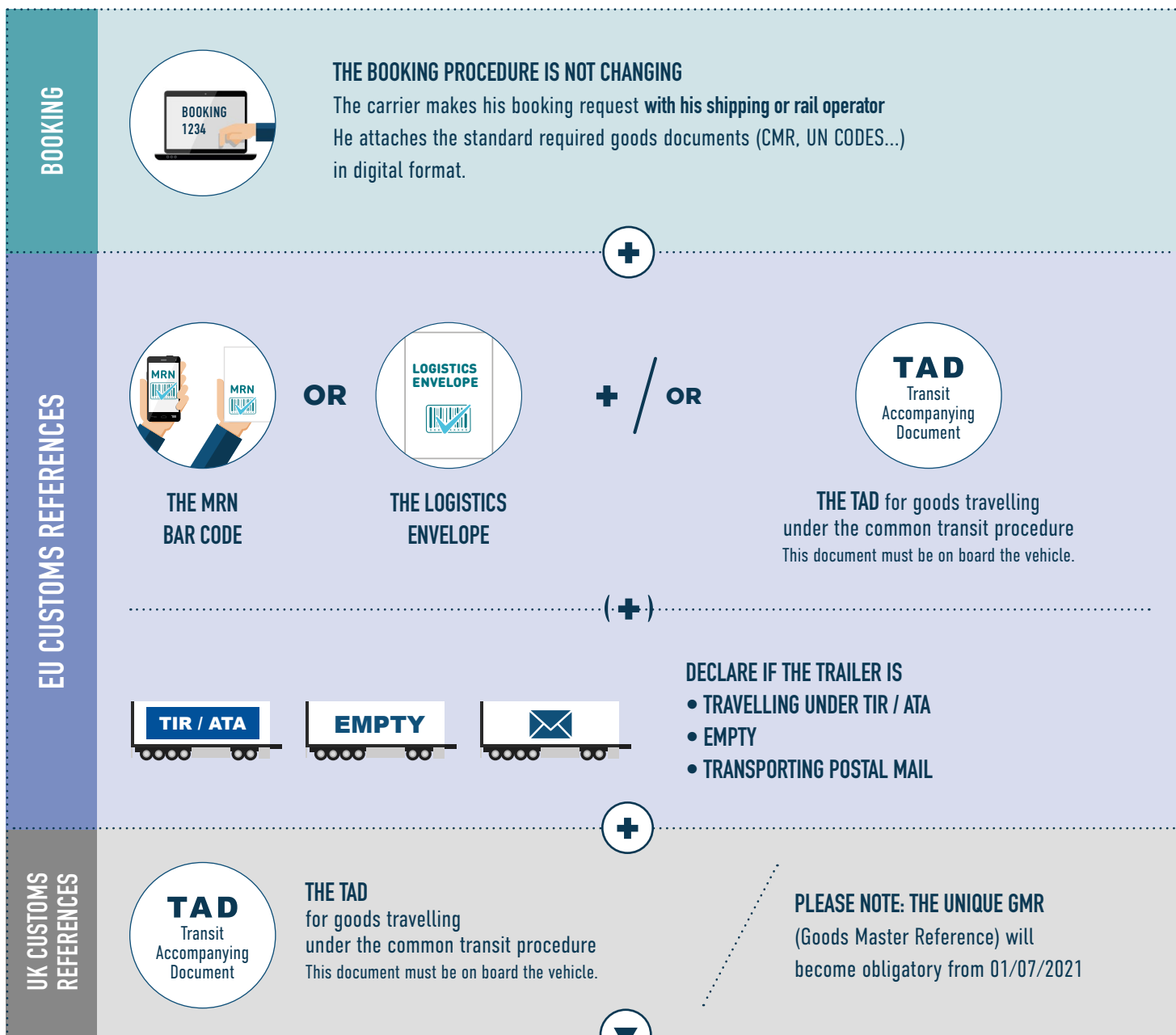
DOVER
import UK

MY EASY BREXIT

**PASSING THROUGH THE PORT
OF CALAIS FOR
UNACCOMPANIED TRAILERS**

AT THE PORT OF CALAIS

DOCUMENTS AND INFORMATION REQUIRED FOR LOADING TRAILERS:



THE SHIPPING COMPANY THEN COMPLETES PAIRING

ONCE PAIRING IS COMPLETED, REGISTRATION WILL BE VALIDATED
The driver can deliver the trailer to the unaccompanied park.



**The goods documents and
TIR / ATA carnet must travel
with the trailer**



CALAIS
export EU



DOVER
import UK

MY EASY BREXIT

**PASSING THROUGH THE PORT
OF CALAIS FOR
UNACCOMPANIED TRAILERS**

IMPORTANT NOTICE

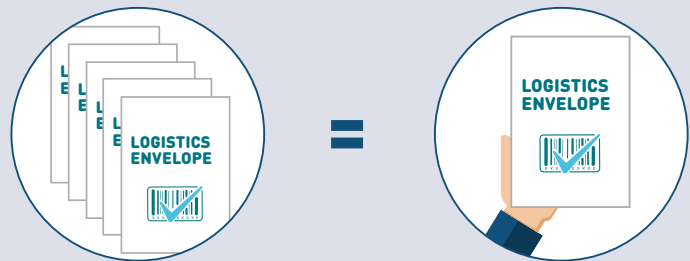
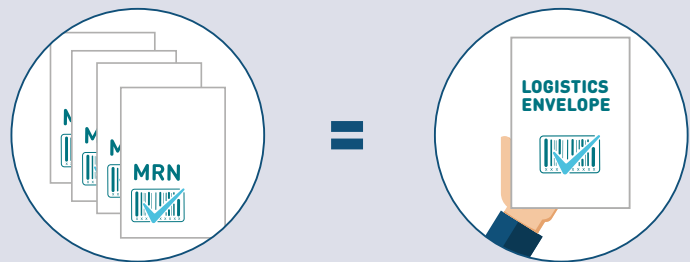
FOR GROUPAGE, USE THE LOGISTICS ENVELOPE

Each batch on board the trailer corresponds to a unique MRN. The driver must present as many MRNs as there are batches.

French Customs offers an app for grouping MRNs under ONE SINGLE barcode: **logistics envelope**.

The logistics envelope can be generated by the customs broker, carrier or even the driver.

Likewise, several logistics envelopes can be grouped under a single barcode.



douane.gouv.fr/enveloppe/fr

or



on the port's web app: **e-border Calais Port**
active as of 01/01/2021



UNIQUE BAR CODE



FASTER CHECK-IN

SPECIFIC CASE

If the road haulier has not previously, during booking, supplied the items required for pairing, the driver must be able to provide them when dropping off the trailer.

THESE TRAILERS WILL NOT HAVE PRIORITY FOR ACCESS TO THE UNACCOMPANIED TRAILER PARK



DOVER
export UK



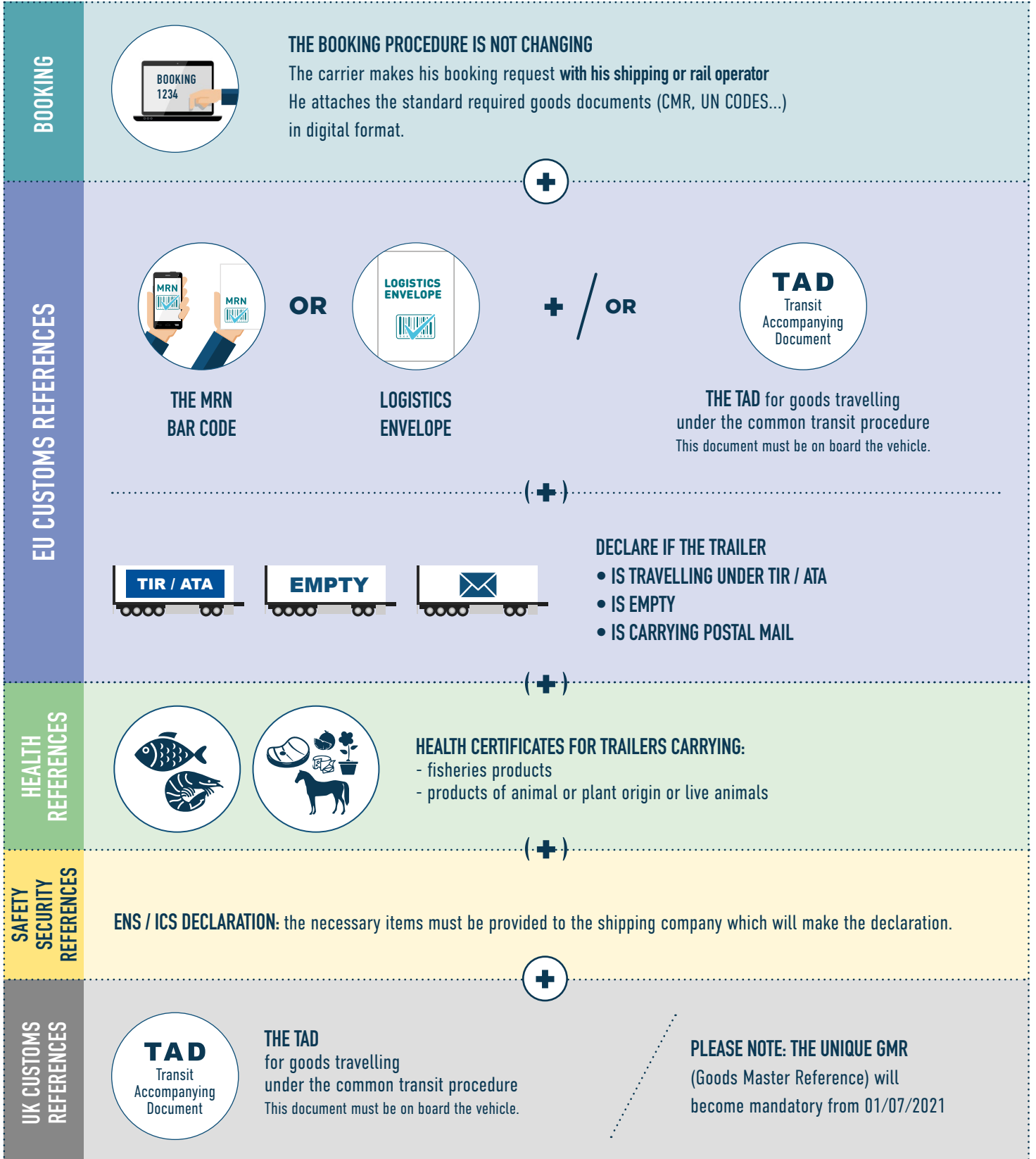
CALAIS
import EU

MY EASY BREXIT

**PASSING THROUGH THE PORT
OF CALAIS FOR
UNACCOMPANIED TRAILERS**

AT THE PORT OF DOVER

DOCUMENTS AND INFORMATION REQUIRED FOR LOADING TRAILERS:





DOVER
export UK



CALAIS
import EU

MY EASY BREXIT

PASSING THROUGH THE PORT OF CALAIS FOR UNACCOMPANIED TRAILERS



THE SHIPPING COMPANY CARRIES OUT PAIRING

ONCE PAIRING IS COMPLETE, REGISTRATION WILL BE VALIDATED
The trailer can be loaded



The goods documents,
TIR/ATA carnet
and health certificates
must travel with the trailer

DOCUMENT CHECKS ARE CARRIED OUT BY FRENCH CUSTOMS DURING THE CROSSING

At the end of these checks, a customs status will be assigned to the goods:



GREEN STATUS

The file is in order, the driver can come and collect the trailer from the unaccompanied park.

ORANGE STATUS

The file needs to be properly completed or the load inspected. The trailer cannot be removed until its status is put in order.



ORANGE CUSTOMS Why?

- The advance customs declaration is awaiting validation by the customs broker
- The advance customs declaration is awaiting administrative authorisation (by french customs)
- The cargo is subject to a physical inspection (by french customs)
- The trailer is travelling under the TIR / ATA regime
- The ENS declaration has not been completed



ORANGE SIVEP: Veterinary and phytosanitary inspection service Why?

- The cargo is subject to documentary and identity checks of regulated goods (such as products of animal origin intended for consumption, live animals, plants etc and fishery products)
- The cargo is subjected to a sanitary inspection



DOVER
export UK



CALAIS
import EU

MY EASY BREXIT

**PASSING THROUGH THE PORT
OF CALAIS FOR
UNACCOMPANIED TRAILERS**

HOW DO I KNOW IF THE TRAILER CAN BE RELEASED?

- **THE CUSTOMS BROKER**

WILL BE AWARE OF THE STATUS OF THE GOODS:

via the customs declaration platform

and can immediately proceed with validating the declaration

in case of **ORANGE STATUS** or organise the sanitary inspection of the goods if this is the case.

- **THE ROAD HAULIER WILL KNOW**

THE STATUS OF THE TRAILER:

By logging on to the web app:

e-border Calais Port (QR code opposite)

or at m.portboulgnecalais.fr

All you have to do is enter the trailer's number plate.

THE CARRIER WILL THEN KNOW:

If the trailer can be picked up (**GREEN STATUS**)

or if it needs to wait for its status to be authorised (**ORANGE STATUS**).



e-border Calais Port
active as of 01/01/2021

MOVING UP FROM ORANGE STATUS

In most cases, the road haulier will be able to monitor the changing status of the cargo

via the web app: **e-border Calais Port**.

As soon as it turns green, the trailer can be picked up.



However, for certain authorisations (customs controls or physical inspections of the goods), only the customs broker (or their commis) will have the information for the delivery order. The carrier must then follow their instructions.

**THE TRAILER CAN ONLY BE RELEASED AFTER AUTHORISATION
OF ITS STATUS AND PROVISION OF A DELIVERY ORDER (BAE)**